



History and Scope of the Lepidoptera Collections at the California Academy of Sciences

Christopher C. Grinter

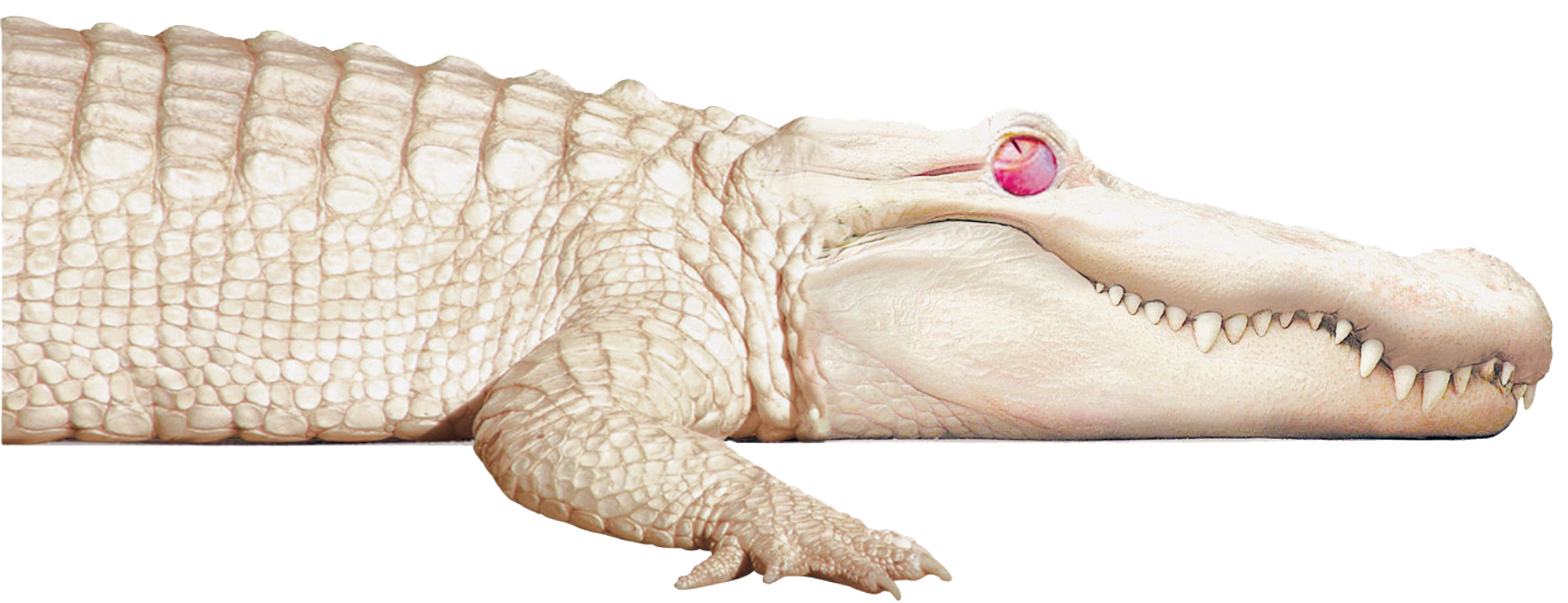
Lepidoptera Course, 2017



CALIFORNIA
ACADEMY OF
SCIENCES

Overview

- A Brief History of the CAS
- The Lep Collection
 - Lepidoptera Types
 - Major contributions
- Future Directions



Foundations of the Academy

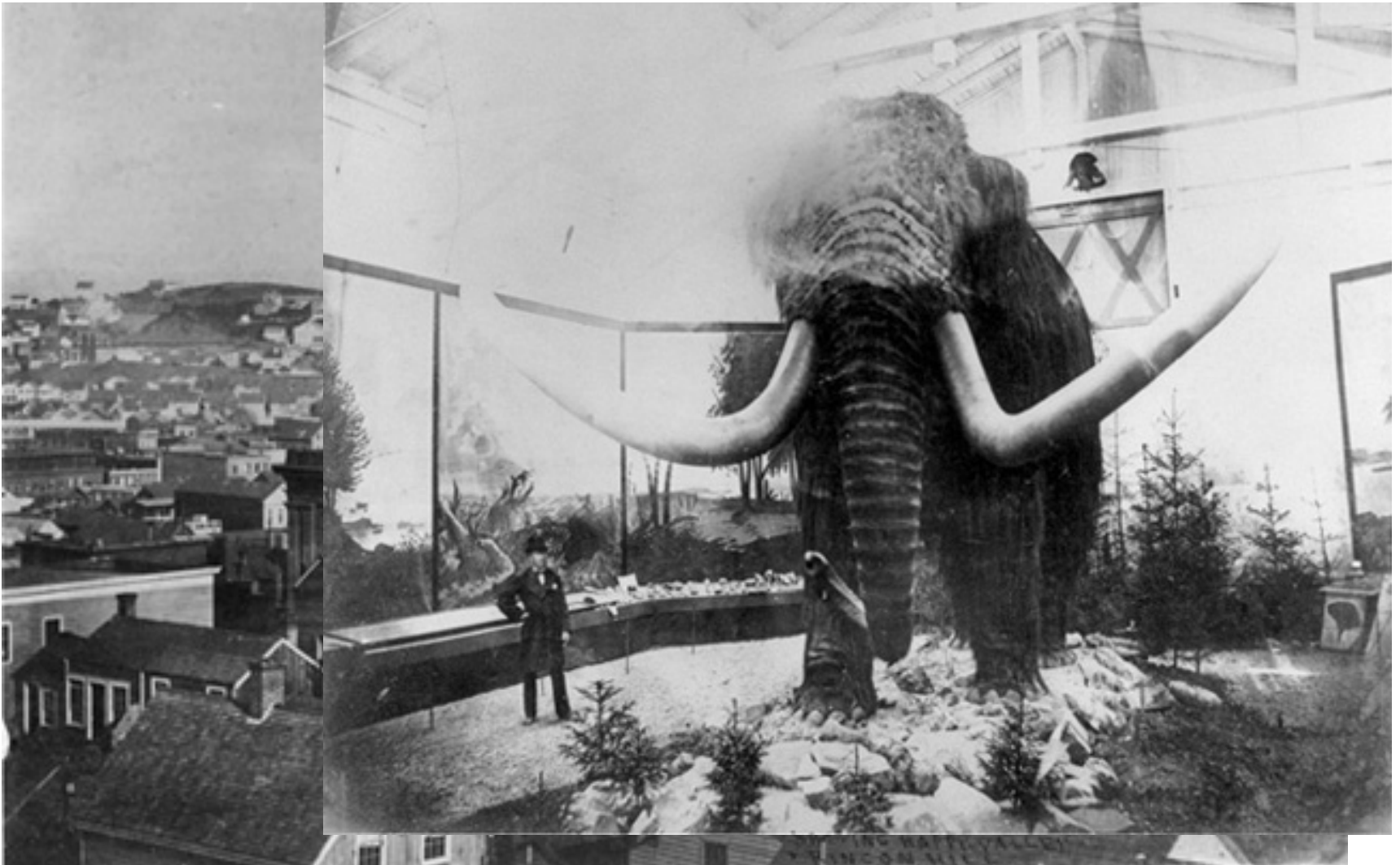
Founded in 1853 as the California Academy of Natural Sciences. Pictured is Andrew Randall, one of the seven founders and 1st president.

Rebranded as CAS in 1868



A Brief History of the Academy

1874 – 1st building – housed in an old church on DuPont Ave. (now California & Grant)



A Brief History of the Academy

1883 – 1st female curators “We highly approve of the aid of females in every department of natural science, and invite their cooperation”



Mary Katharine Curran Brandegee
(Botany, 1883)



Rosa Smith (Ichthyology, 1884)

1891 – 2nd building



ny

A Brief History of the Academy

1906 – The Great Earthquake, loss of most of the collections. Struck at 5:12am at a magnitude 7.8. 80% of San Francisco burned.







Alice Eastwood



A Brief History of the Academy

1916 – 3rd building (of a complex to grow around it) in Golden Gate Park.



North American Hall





1960

A Brief History of the Academy

1989 – Loma Prieta Earthquake – 6.9 M



OPEN EVERY DAY!

CALIFORNIA ACADEMY OF SCIENCES



STEINHART AQUARIUM



A Brief History of the Academy

2004 – Relocated to Howard Street in a transitional building.



A Brief History of the Academy

2008 – New building in Golden Gate Park







12

Types?
typical

W. G. Wright
San Bernardino. California

Idunas used for
illustr. Bull. N. A. 1896

SENT BY
WM. H. EDWARDS,
Coalburgh, W. Va.



W. H. Edwards
Coalburgh Kanawha
West Va.

Idunas
lowe
Encl.



CURCULIONID



Malaysia
Wallace



Cercyonis sthenele sthenele



Speyeria adiastra atossa



Parnassius clodius strohbeeni



Glacopsyche xerces

Papilio Pyrrhopterus homerus
Fabricius



Papilio (Meneides) lampasus
Rehnthal



Papilio
chiracae



Dryas
paradise
hercules
hercules



U. sloanus
ca.



U. sloanus



1975

6 sets

1978

1979

1976

4 sets

1978

no set

1971

1972

← 1970

more ↓



Backlog Collections

- 6,000 flats
- 2-6 million specimens?
- Dating back to 1900 (Hawaii, 1901).
- Ross/Schlinger/Irwin material contains lots of showy material
- Lots of leps in great shape!





BRASIL: Estado do
Espírito Santo, 20km
N. of Linhares, Forest
Res. 40m ~~19~~.IV.1992
Edward S. Ross
Cal. Acad.Sci. Coll.

BRASIL: Estado do
Espírito Santo, 20km
N. of Linhares, Forest
Res. 40m ~~19~~.IV.1992
Edward S. Ross
Cal. Acad.Sci. Coll.

Spine try
Road: 20 km N.
40 m
11-92
E.S. Ross

BRASIL: Estado do
Espírito Santo, 20km
N. of Linhares, Forest
Res. 40m ~~19~~.IV.1992
Edward S. Ross
Cal. Acad.Sci. Coll.

Ross - Brazil, 1992



Schuster – Galapagos 1964



Ross & Cavagnaro – Assam India, 1961



Norman Tindale collection

Approximately 15 drawers of Hepialidae, some assorted leps.







Hartford H. Kiefer collection







C. Don MacNeill

Assistant Curator 1957-1965,
worked at the CAS after
retirement until his passing in
2005.









Papilio (Priniceps) buddha Westwood

Papilio buddha (male)



PAPILIO BUDHA WESTWOOD

Papilio (Priniceps) constantinus constantinus



Papilio (Priniceps) cimo Fabricius



Papilio Urticae *Urticae* *antiochus*
Felder & Felder







Delias imitator Kenrick



Delias ipe (Cramer)



Delias isocharia isocharia
Rothschild & Jordan



Delias itampuzi Ribbe



Delias kolocoi Telford



Delias kowachi Telford





Paul Ehrlich



Noel LaDue







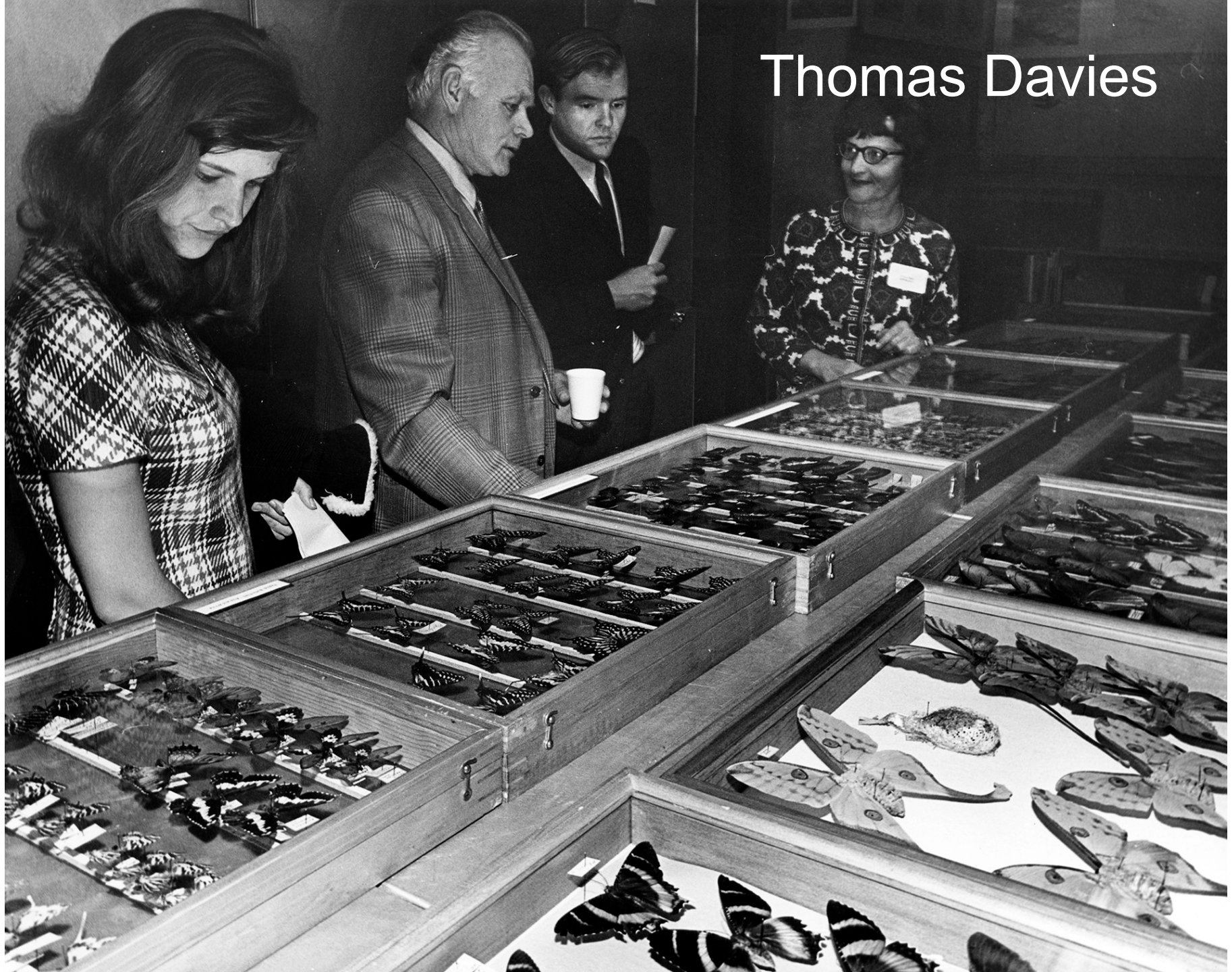
UNDETERMINED LEPIDOPTERA



UNDETERMINED LEPIDOPTERA



Thomas Davies





Harry Lange

The CAS Wet Collections









Cryo Collections



Acknowledgements

CAS Entomology: Brian Fisher, Michelle Trautwein, Lauren Esposito, Jere Schweikert, Rachel Diaz-Bastin, Bob Zuparko, Kristen Vollrath, Darrell Ubick, Michele Esposito, Wojciech Pulawski, Dave Kavanaugh, Charles Griswold.

CAS Library: Rebekah Kim, Heather Miles

Katy Prudic, the EC and LepSoc!



CALIFORNIA
ACADEMY OF
SCIENCES

Seasons Greetings
1951
Department of Entomology
California Academy of Sciences



Edwin C. Van Dyke



Edward S. Ross



Edward L. Kessel



J. W. Green



Hugh B. Heech